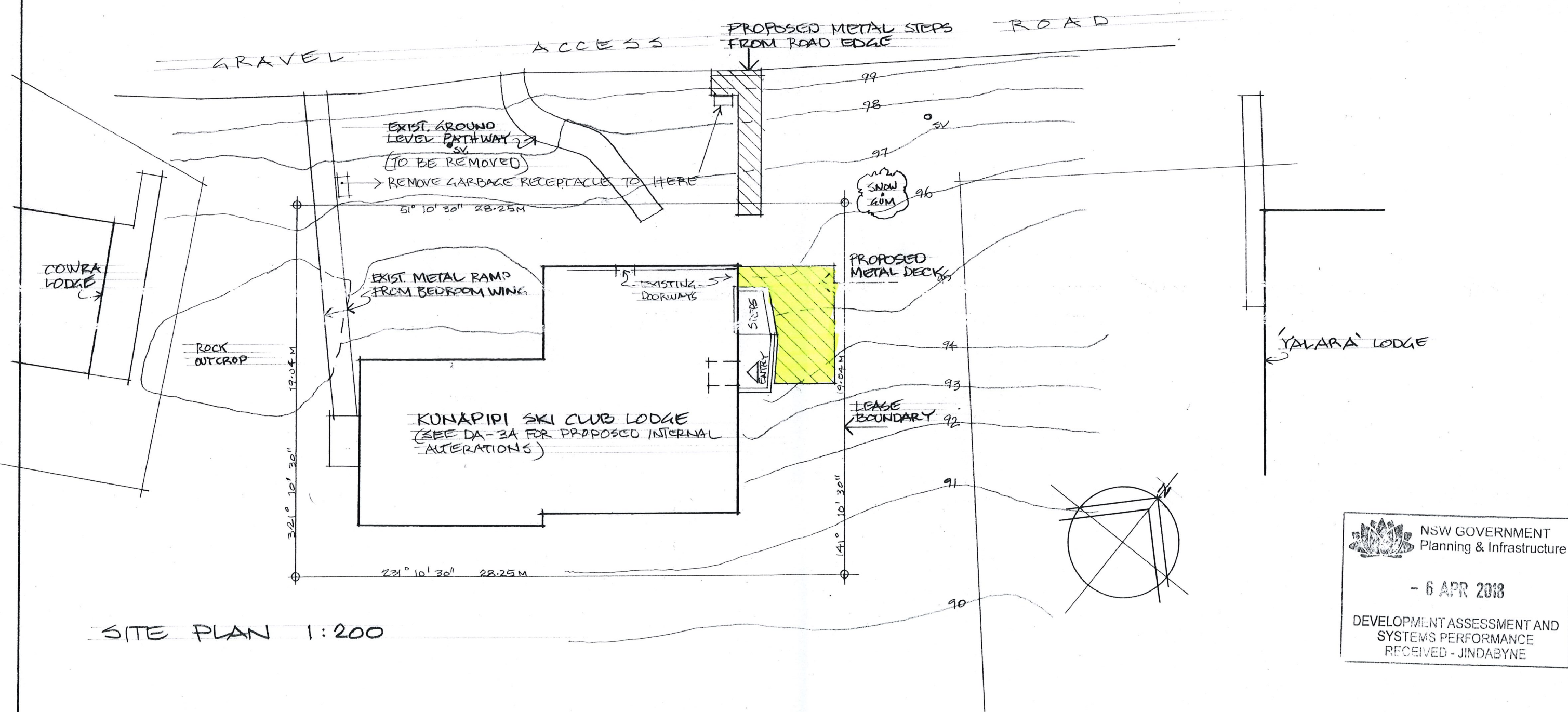


PROPOSED ALTERATIONS & ADDITIONS  
TO KUNAPIPI SKI CLUB LODGE, PERISHER  
VALLEY NSW, - FOR KUNAPIPI SKI CLUB  
DEVELOPMENT APPLICATION - DA 1B

AUGUST 2017 SCALE 1:200

MARK CAMBOURN & ASSOCIATES PTY LTD  
18 LOCKINVAR PLACE, HORNSBY NSW 2077  
PHONE (02) 9987 4987 mjcamboourn@hotmail.com

DATE	AMEND.	DESCRIPTION	BY
8/3/18	B	UPDATE STAIRS; REMOVE EXIST. PATH STEPS; RELOCATE GARBAGE RECEPTACLE	MC



SITE PLAN 1:200

NSW GOVERNMENT  
Planning & Infrastructure

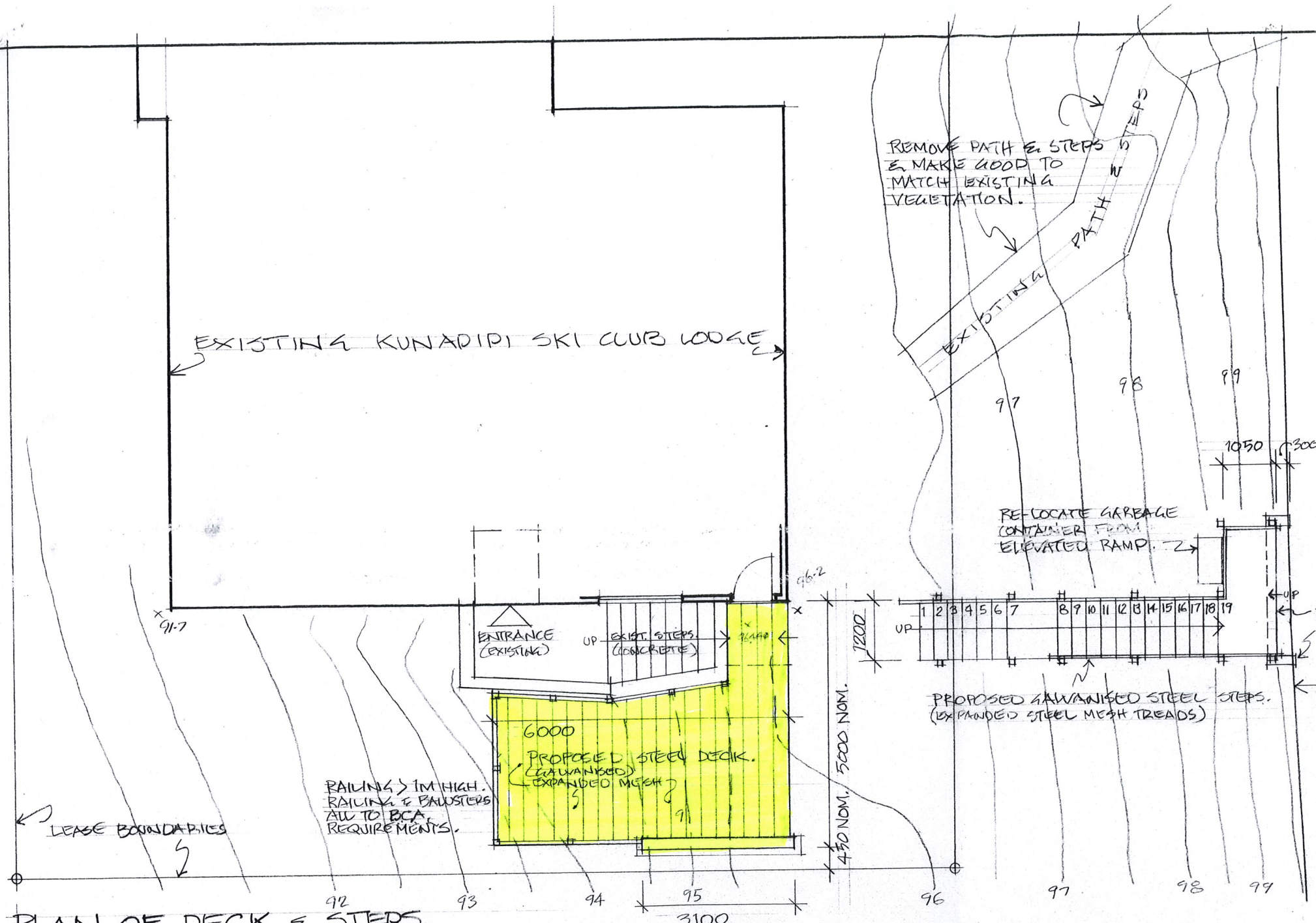
- 6 APR 2018

DEVELOPMENT ASSESSMENT AND  
SYSTEMS PERFORMANCE  
RECEIVED - JINDABYNE

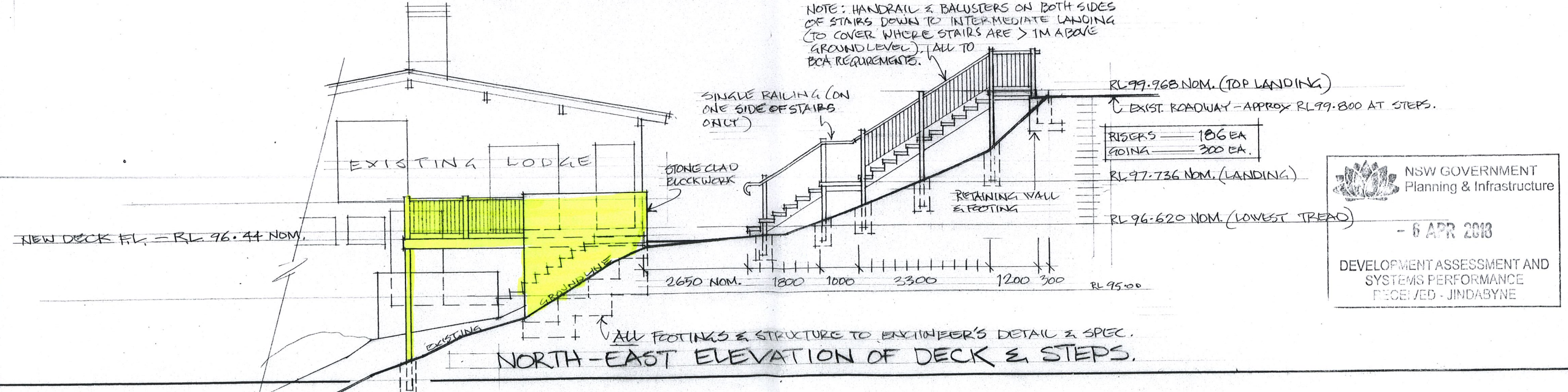
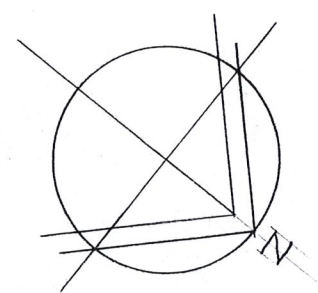
PROPOSED ALTERATIONS & ADDITIONS TO KUNAPIPI SKI CLUB LODGE, PERISHER VALLEY NSW - FOR KUNAPIPI SKI CLUB DEVELOPMENT APPLICATION - DA 28  
 AUGUST 2017 SCALE 1:100

MARK CAMBOURN & ASSOCIATES PTY LTD  
 18 LOCKINVAR PLACE, HORNSBY NSW 2077  
 PHONE (02) 9987 4987 mjcambourn@hotmail.com

DATE	AMEND.	DESCRIPTION	BY
8/3/18	B	ADD LARGER TOP LANDING, 1 MORE TREAD TO STEPS. RAISE STEPS. REMOVE PATH; RELOCATE GARBAGE RECEPTACLE.	MC



PLAN OF DECK & STEPS.



NOTE: HANDRAIL & BALUSTERS ON BOTH SIDES OF STEPS DOWN TO INTERMEDIATE LANDING (TO COVER WHERE STEPS ARE > 1M ABOVE GROUND LEVEL). ALL TO BCA REQUIREMENTS.

NSW GOVERNMENT  
 Planning & Infrastructure

- 6 APR 2018

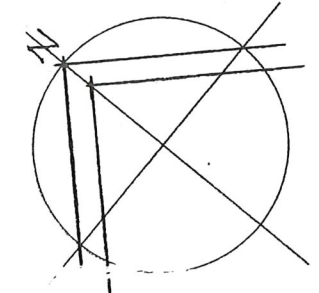
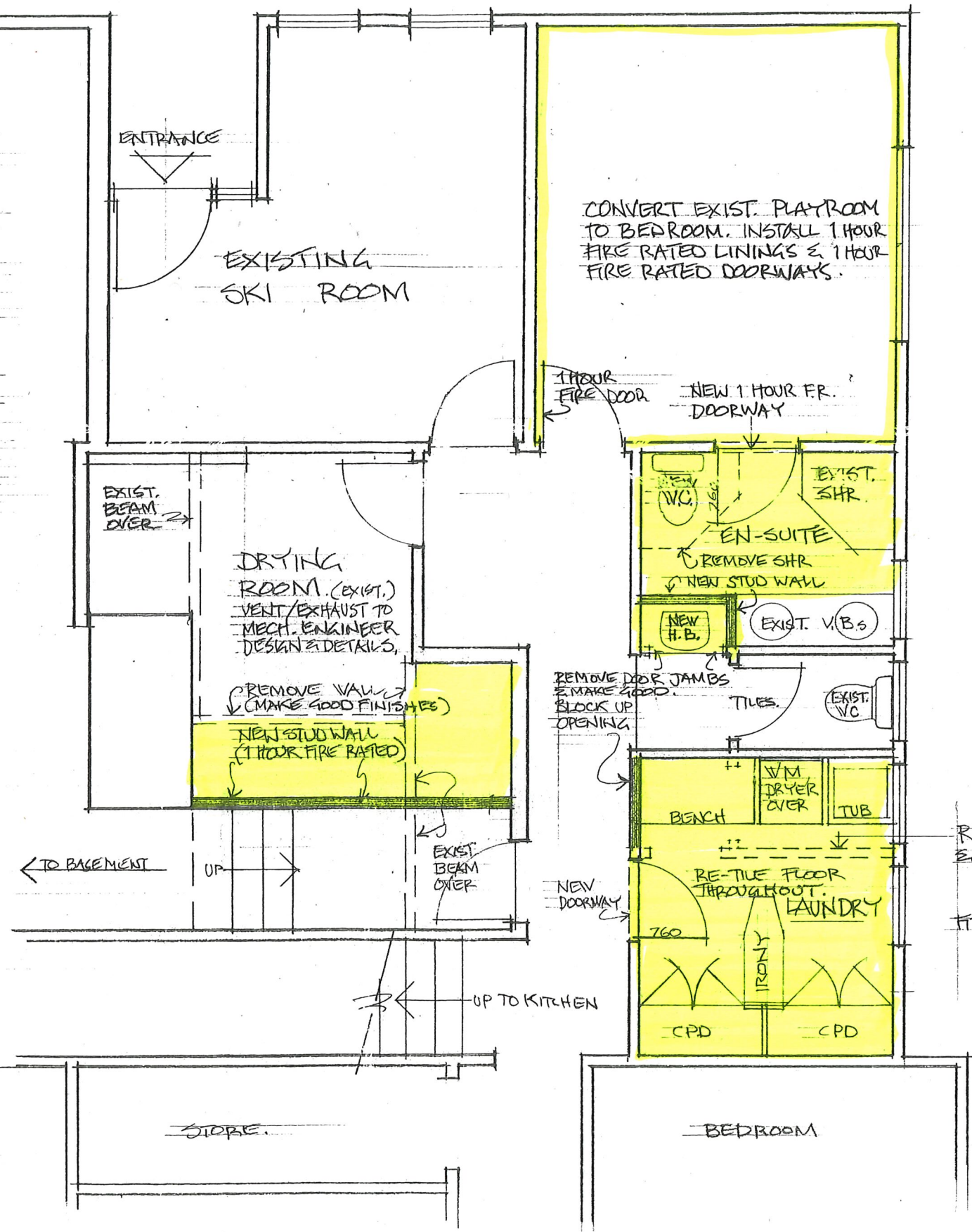
DEVELOPMENT ASSESSMENT AND SYSTEMS PERFORMANCE RECEIVED - JINDABYNE

PROPOSED ALTERATIONS & ADDITIONS  
 TO KUNAPIPI SKI CLUB LODGE, PERISHER  
 VALLEY NSW. - FOR KUNAPIPI SKI CLUB  
 DEVELOPMENT APPLICATION - DA-3A  
 AUGUST 2017 SCALE 1:50

MARK CAMBOURN & ASSOCIATES PTY LTD  
 18 LOCKINVAR PLACE, HORNSBY NSW 2077  
 PHONE (02) 9987 4987 mjcambourn@hotmail.com

DATE	AMEND	DESCRIPTION	BY

NOTE: MECHANICAL VENTILATION TO  
 DRYING ROOM TO COMPLY WITH AS 1668.1,  
 CL. J5.3 AND C3.15(b) OF THE BCA,  
 (C3.15(b) REFERS TO AS 1668.1)



PARTIAL PLAN OF KUNAPIPI SKI CLUB LODGE 1:100

NSW GOVERNMENT  
 Planning & Infrastructure

- 6 APR 2018

DEVELOPMENT ASSESSMENT AND  
 SYSTEMS PERFORMANCE  
 RECEIVED - JINDABYNE